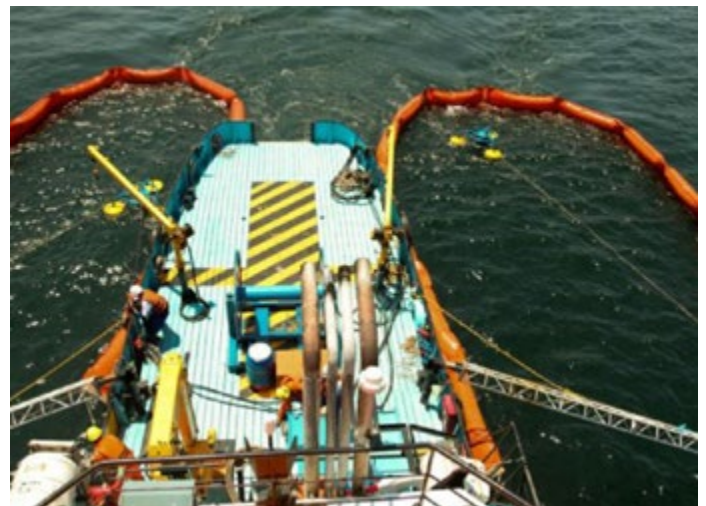


AIRMAX V-SWEEP DESCRIPTION



AirMax is manufactured with a special process, using durable 36oz fabric, to ensure the best possible integrity of the air chambers. A foam panel inside the air chamber provides secondary buoyancy. Ballast is provided by a galvanized chain secured in a reinforced pocket. The high buoyancy to weight ratios of the AirMax boom provide excellent wave conformance and oil retention characteristics. Handles are fitted at regular intervals.





Boom Specification

| | |
|---------------------------|--|
| Connector Height: | 64 inch / 1.625 m approx |
| Operational Height: | 53 inch / 1.35 m |
| Sweep Opening: | 40 ft / 12 m |
| Freeboard: | 24 inch / 609 mm |
| Draft: | 29 inch / 736 mm |
| Ballast / Bottom Tension: | 1/2 inch / 12 mm galvanized chain in double layer urethane fabric sleeve Net for retainin sweep shape |
| Total Length of Boom: | 130 ft / 40 m approx |
| Inflation Pressure: | 0.5 psi @ 70°F |
| Fabric: | 36 oz. Urethane coated polyester +/-2 |
| Connector: | ASTM Universeal Slide available |
| Optional: | Boom reel |
| | |
| | |

Outrigger

Suitable for use with V -Sweep for single ship operations
 40ft / 12 m Jib arm made of aluminum trellis with ship fitting connection and float.
 Includes rigging and Gimble Assembly