

ELASTEC

Containment Boom



Oil Spill Equipment | Floating Barriers | Incinerators

Curtain Boom

Elastec's Floating Barrier Division (formerly American Marine) was established in 1967 manufacturing booms and barriers. We now produce a wide range of curtain booms for oil spill response and surface containment.

Our foam filled curtain booms are offered in multiple sizes for small waterways up to large offshore scenarios. Fitted with cylindrical closed cell flotation and a galvanized ballast chain, they are offered in a choice of fabrics. A top cable for added strength is optional. Elastec booms conform to ASTM standards and United States CFR requirements according to bodies of water. A full range of accessories facilitate deployment, storage, mooring and maintenance.

<p>SuperStream</p> 	<p>Height: 8 inch / 200 mm</p>	<p>Weight: 0.5 lb/ft / 0.74 kg/m</p>	<p>Actual Breaking Strength: 1,800 lb / 818 kg</p>
<p>SuperSwamp</p> 	<p>Height: 10 inch / 250 mm</p>	<p>Weight: 0.8 lb/ft / 1.1 kg/m</p>	<p>Actual Breaking Strength: 1,800 lb / 818 kg (Swiftwater Model offers 5,800 lb / 2,630 kg)</p>
<p>Simplex</p> 	<p>Height: 12 inch / 300 mm 18 inch / 460 mm 20 inch / 500 mm 24 inch / 610 mm</p>	<p>Weight: 1.68 lb/ft / 2.49 kg/m 1.7 lb/ft / 2.5 kg/m 1.8 lb/ft / 2.67 kg/m 2.2 lb/ft / 3.3 kg/m</p>	<p>Actual Breaking Strength: 5,000 lb / 2,273 kg 5,000 lb / 2,273 kg 5,000 lb / 2,273 kg 5,000 lb / 2,273 kg</p>
<p>Optimax</p> 	<p>Height: 13 inch / 330 mm 14 inch / 350 mm 19 inch / 480 mm 20 inch / 500 mm</p>	<p>Weight: 2.2 lb/ft / 3.3 kg/m 2.3 lb/ft / 3.4 kg/m 2.3 lb/ft / 3.4 kg/m 2.4 lb/ft / 3.6 kg/m</p>	<p>Actual Breaking Strength: 6,400 lb / 2,900 kg 6,400 lb / 2,900 kg 6,400 lb / 2,900 kg 6,400 lb / 2,900 kg</p>
<p>SuperMax</p> 	<p>Height: 36 inch / 910 mm 42 inch / 1,060 mm</p>	<p>Weight: 2.9 lb/ft / 4.4 kg/m 4.3 lb/ft / 6.3 kg/m</p>	<p>Actual Breaking Strength: 12,500 lb / 5,669 kg 16,500 lb / 7,500 kg</p>

Fence Boom

Elastec MaxiMax and MiniMax oil spill fence booms are offered in a variety of sizes for rapid deployment from boom reels, racks or pallets. This oil and debris barrier is typically used for deployment in ports and harbors for surrounding vessels or protecting resources. The construction incorporates top and bottom tension members (cable on top and chain on bottom).

EconoMax



Height:

16 inch / 400 mm

Weight:

1.2 lb/ft / 1.8 kg/m

Actual Breaking Strength:

1,800 lb / 818 kg

MiniMax & MaxiMax



Height:

17 inch / 430 mm

25 inch / 635 mm

30 inch / 760 mm

36 inch / 910 mm

42 inch / 1,060 mm

44 inch / 1,100 mm

Weight:

1.2 lb/ft / 1.8 kg/m

2.2 lb/ft / 3.3 kg/m

2.6 lb/ft / 3.9 kg/m

2.8 lb/ft / 4.2 kg/m

5 lb/ft / 7.5 kg/m

5 lb/ft / 7.5 kg/m

Actual Breaking Strength:

6,400 lb / 2,909 kg

6,400 lb / 2,909 kg

6,400 lb / 2,909 kg

12,500 lb / 5,669 kg

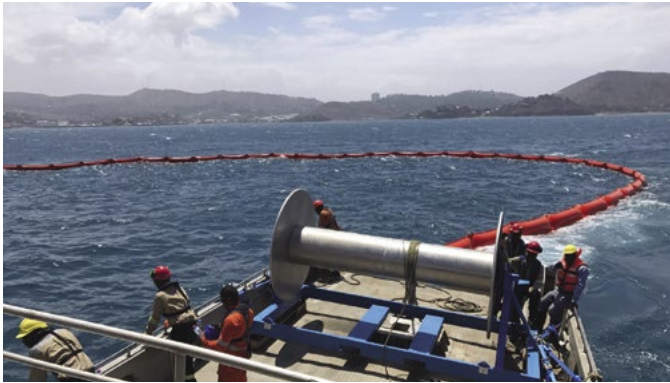
16,500 lb / 7,500 kg

16,500 lb / 7,500 kg



Inflatable Boom

ELASTEC AirMax is a versatile, inflatable oil containment boom manufactured from high quality Urethane fabric. Optional foam panels in the air chambers provide added integrity. AirMax booms are compact and quick to deploy, and they are offered in a range of sizes to suit water conditions. This boom features a high buoyancy-to-weight ratio that delivers excellent wave conformance and oil retention. Elastec offers a full range of boom reels that can be delivered for all sizes of AirMax boom. These reels are available mounted on trailers or in storage containers.



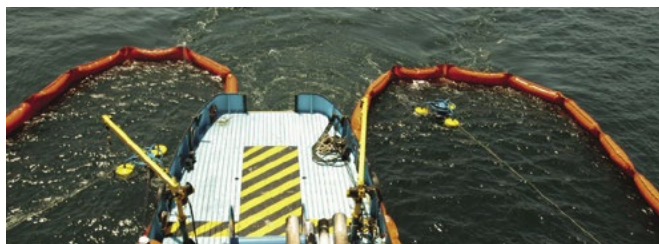
Model:	Height:	Weight:
River	16 inch / 40 cm	1.56 lb/ft / 2.3 kg/m
Harbor	22 inch / 56 cm	1.85 lb/ft / 2.75 kg/m
Nearshore	32 inch / 81 cm	2.75 lb/ft / 4.1 kg/m
Offshore	43 inch / 110 cm	4.25 lb/ft / 6.3 kg/m
Open Water	48 inch / 122 cm	4.45 lb/ft / 6.6 kg/m
Deep Sea	64 inch / 163 cm	4.9 lb/ft / 7.3 kg/m

ELASTEC RubberMax oil containment boom is produced with the latest materials and techniques. The materials have been extensively tested according to ASTM and military standards, including puncture and abrasion resistance, as well as tear and tensile strength. The construction has two plies of polyester reinforcing fabric coated in synthetic rubber with compounds which are resistant to the elements and oil. RubberMax is designed with a high buoyancy-to-weight ratio, providing the boom with excellent wave riding and oil retention characteristics. It lies flat when stowed, optimizing storage space.

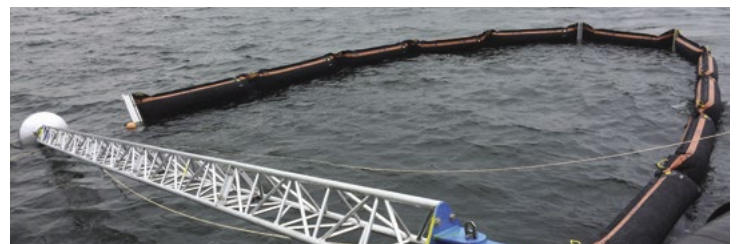


Model:	Height:	Weight:
1000	31 inch / 79 cm	4.4 lb/ft / 6.6 kg/m
1300	43 inch / 110 cm	6.0 lb/ft / 8.9 kg/m
1500	47 inch / 120 cm	6.7 lb/ft / 9.9 kg/m
1800	59 inch / 150 cm	9.1 lb/ft / 13.6 kg/m

ELASTEC AirMax V-Sweep allows single vessels to conduct sweeping operations. An optional outrigger arm mounted to the ship that holds one end of the sweep open. An oil skimmer can be placed inside the apex of the boom. The V-Sweep can be supplied in Urethane fabric or rubber (see RubberMax V-Sweep).



ELASTEC RubberMax V-Sweep is an inflatable rubber boom system for sweeping oil with a single vessel. An optional outrigger arm holds one end of the sweep open in a side sweep arrangement. The boom geometry is held in a V configuration to form a pocket of oil that can be recovered by most oil skimmers.



Transition Boom

ELASTEC ShoreMax is a special purpose inflatable oil spill containment boom for use in shallow, calm water environments or to traverse between the beach and the sea. It is ideal for making the transition between a conventional floating boom and the shoreline. Equally, it is very useful in swamp and marsh areas where the water level can rise and fall. Ballast is provided by water-filled tubes.



ELASTEC TundraGuard oil spill containment boom is effective in swamps, marshes and wetlands. It is a special purpose lightweight boom for use in shallow, calm water environments where the water level may fluctuate and cause conventional booms to leak or fail due to grounding.



Permanent Installation and Debris Boom

ELASTEC PermaFence contains or excludes floating materials such as oil, weeds and trash. It is capable of withstanding long-term deployment in arduous conditions. The foam filled HDPE floats are very durable and can be easily removed from the heavy-duty belt for cleaning. PermaFence is supplied in different sizes and section lengths to suit the application or installation. A choice of belt fabrics is available, along with a range of accessories such as tidal compensators.



The ELASTEC Brute Boom is a heavy duty boom capable of containing trash, logs and large floating debris, as well as providing marine demarcation. Brute Boom can be deployed in rivers, reservoirs, oceans and lakes. It also performs well in fast waters. This boom can be fitted with an optional hot dip galvanized steel skirt underneath for added protection and containment. Brute Boom is available in 10 ft / 3 m and 20 ft / 6 m sections. Standard color is black. Other colors are available with a minimum quantity order requirement.



1309 West Main St.
Carmi, Illinois 62821, USA
+1 (618) 382-2525
www.elastec.com elastec@elastec.com

000-MKT-SL-304
REV#2