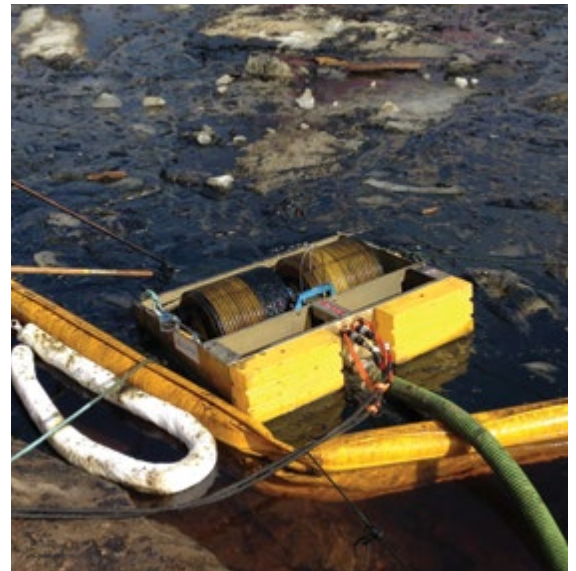
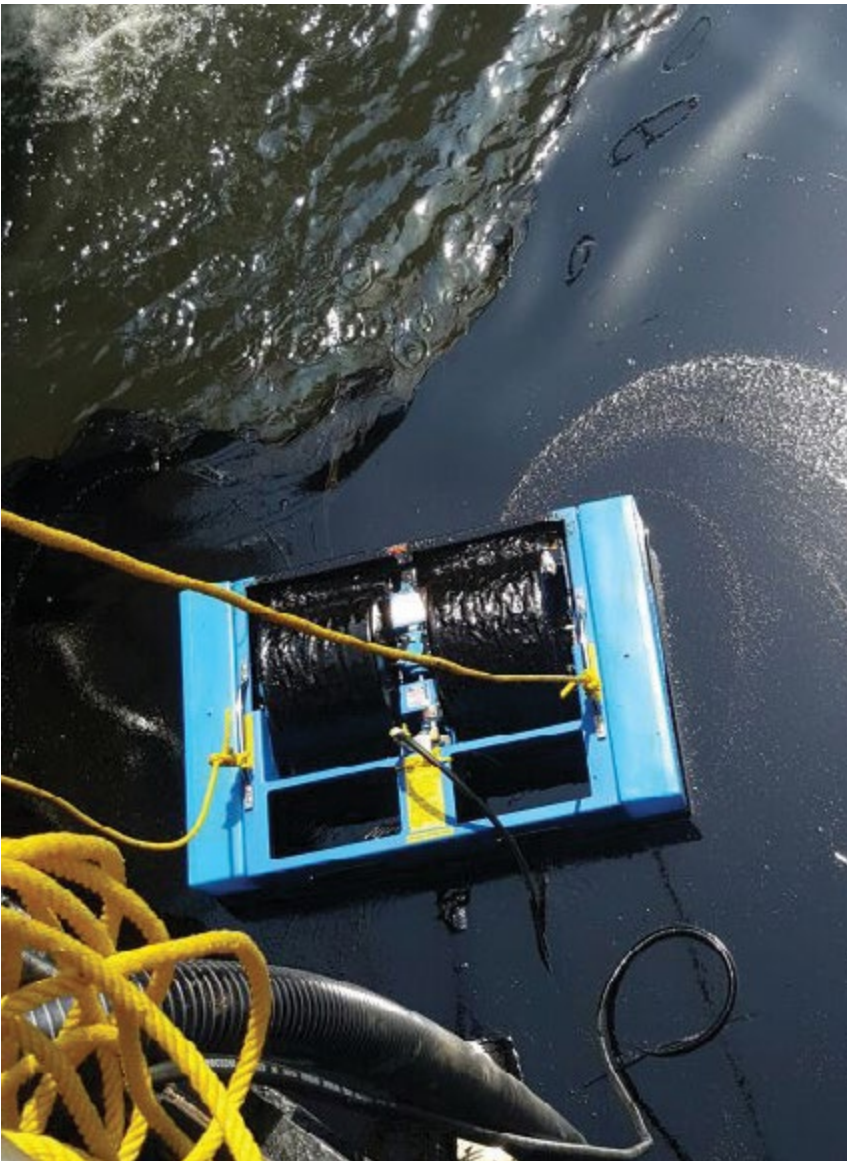


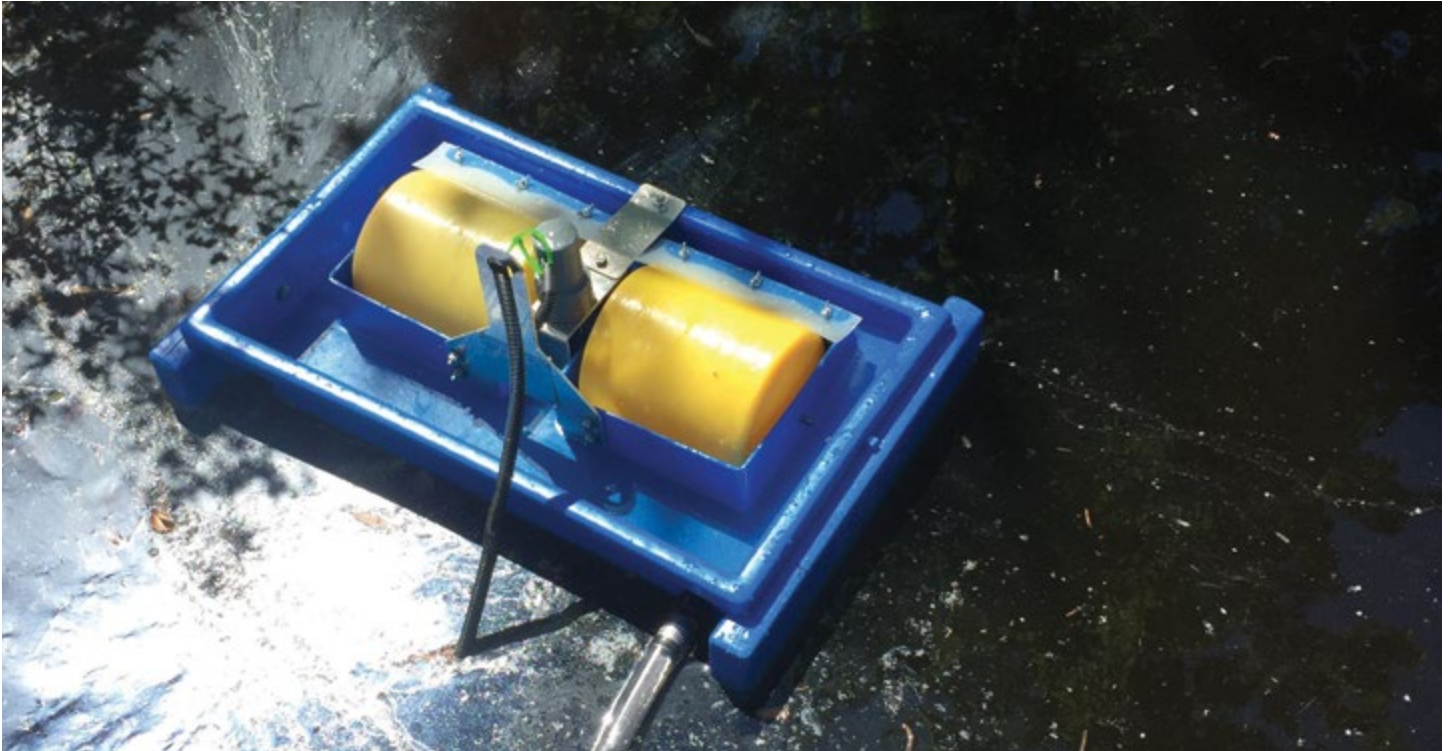
ELASTEC

Drum Skimmers



Oil Spill Equipment | Floating Barriers | Incinerators

12v Mini Skimmer



Variable Recovery Rate

12 lb / 5.4 kg

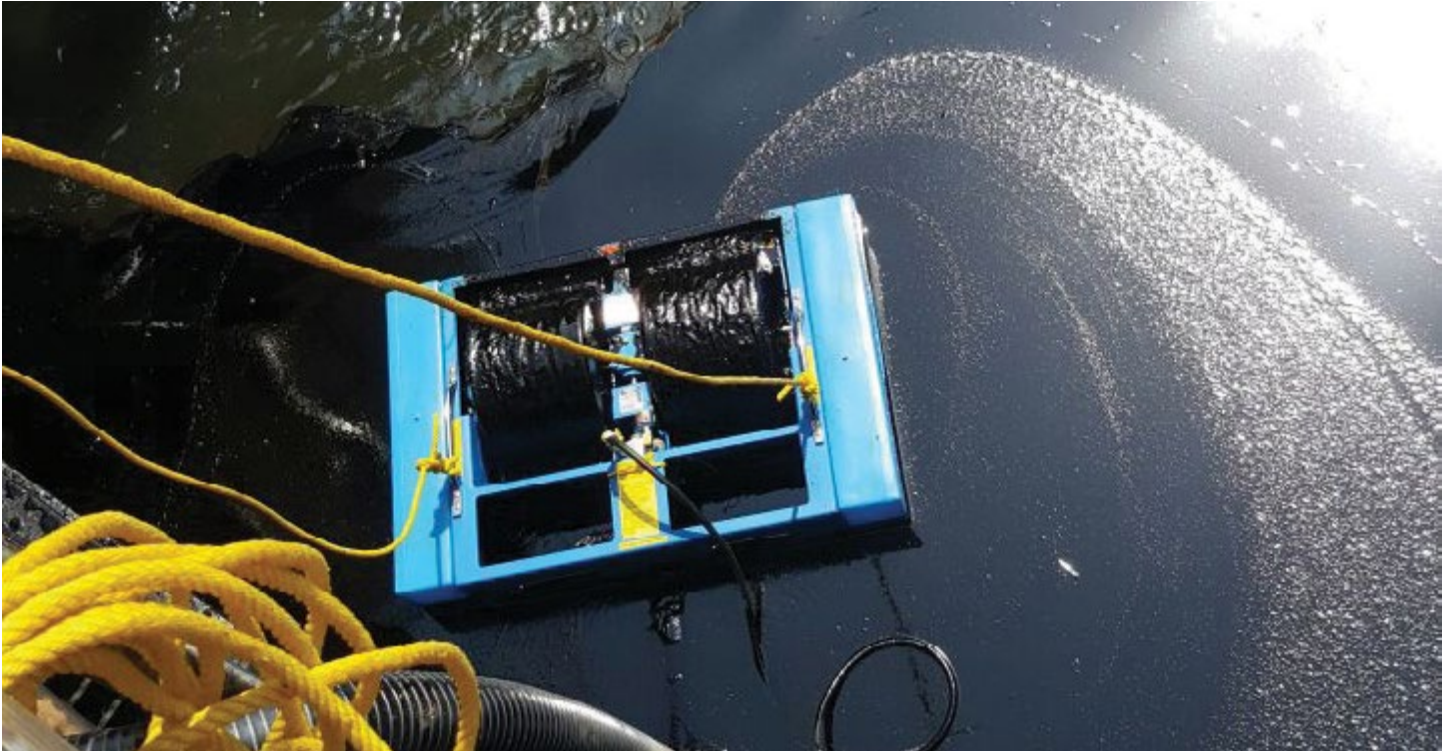
26 x 17 x 12 inch / 0.66 x 0.43 x 0.3 m

Industrial and Inland

The **ELASTEC 12V Mini Drum Skimmer** is a small and lightweight oil skimmer for industrial applications or small inland spills. Powered by a 12V DC motor, it can run for long periods from a standard car battery or continuous 110 / 220v power supply.



MiniMax



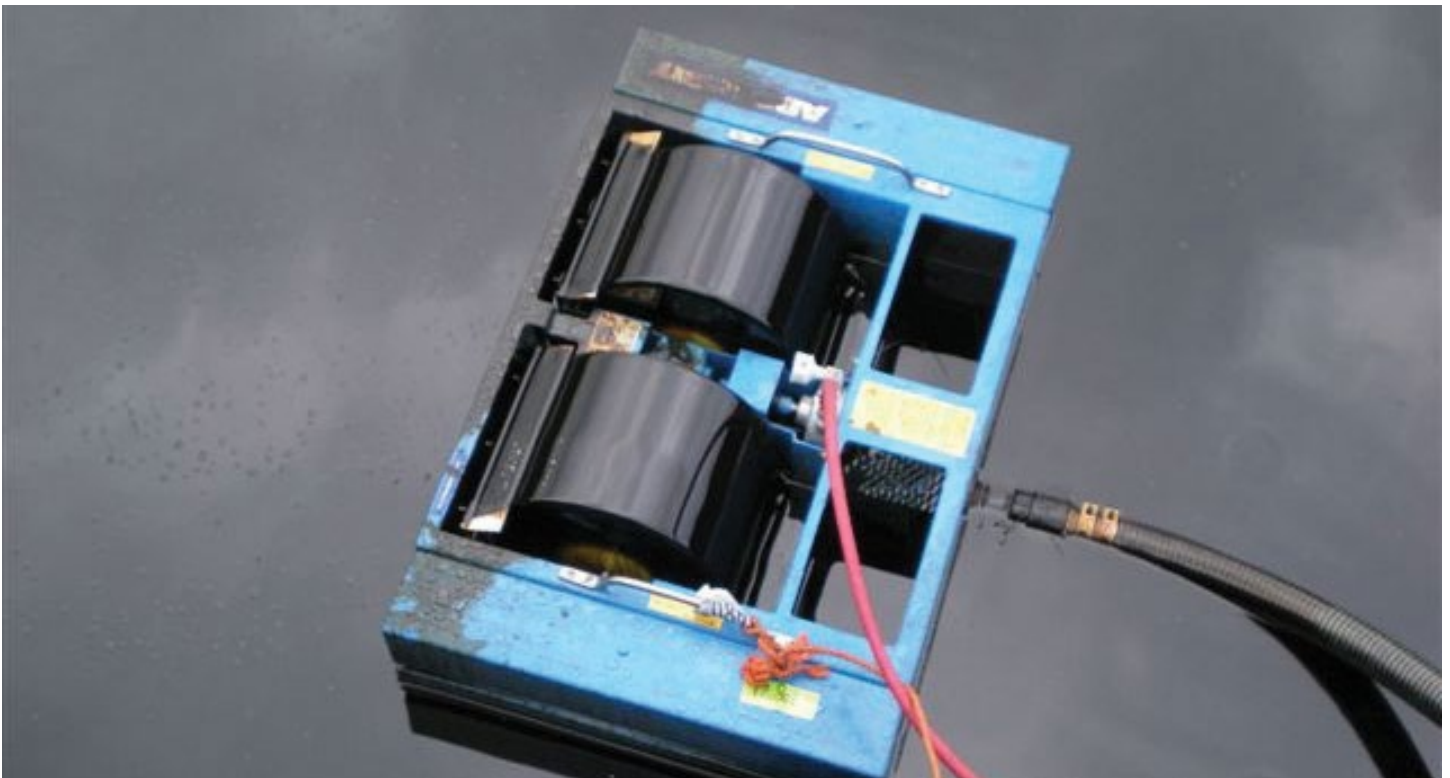
20 gpm / 5 m³h

50 lb / 23 kg

42 x 28 x 14 inch / 1.07 x 0.71 x 0.36 m

Industrial and Inland

The **ELASTEC MiniMax Drum Skimmer** is manufactured in HDPE, making it resistant to many chemicals found in industrial pits, sumps, separators and tanks. Special versions are available for high temperature and highly acidic environments.



TDS118



90 gpm / 20 m³h*

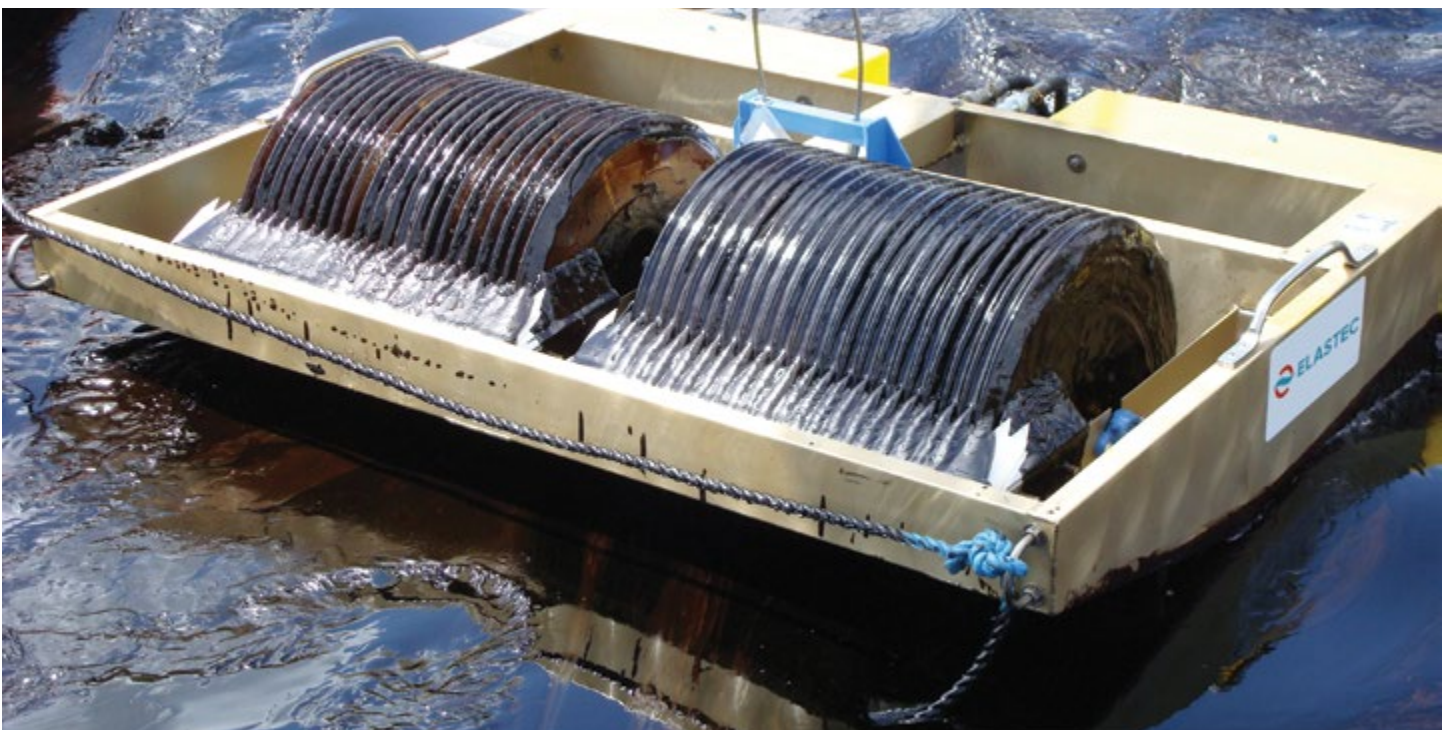
83 lb / 37.6 kg

53 x 41 x 18 inch / 1.33 x 1.02 x 0.46 m

Industrial, Inland, Harbor

Smooth or Grooved Drums

The **ELASTEC TDS118 Drum Skimmer** is available in pneumatic or hydraulic drive for oil spill response or industrial use. Due to its shallow draft and light weight, this practical skimmer is ideal for cleanup in creeks, rivers and lakes. Brush and Disc versions are available.



TDS136



170 gpm / 38 m³h*

135 lb / 61 kg

92 x 42 x 18 inch / 2.34 x 1.07 x 0.46 m

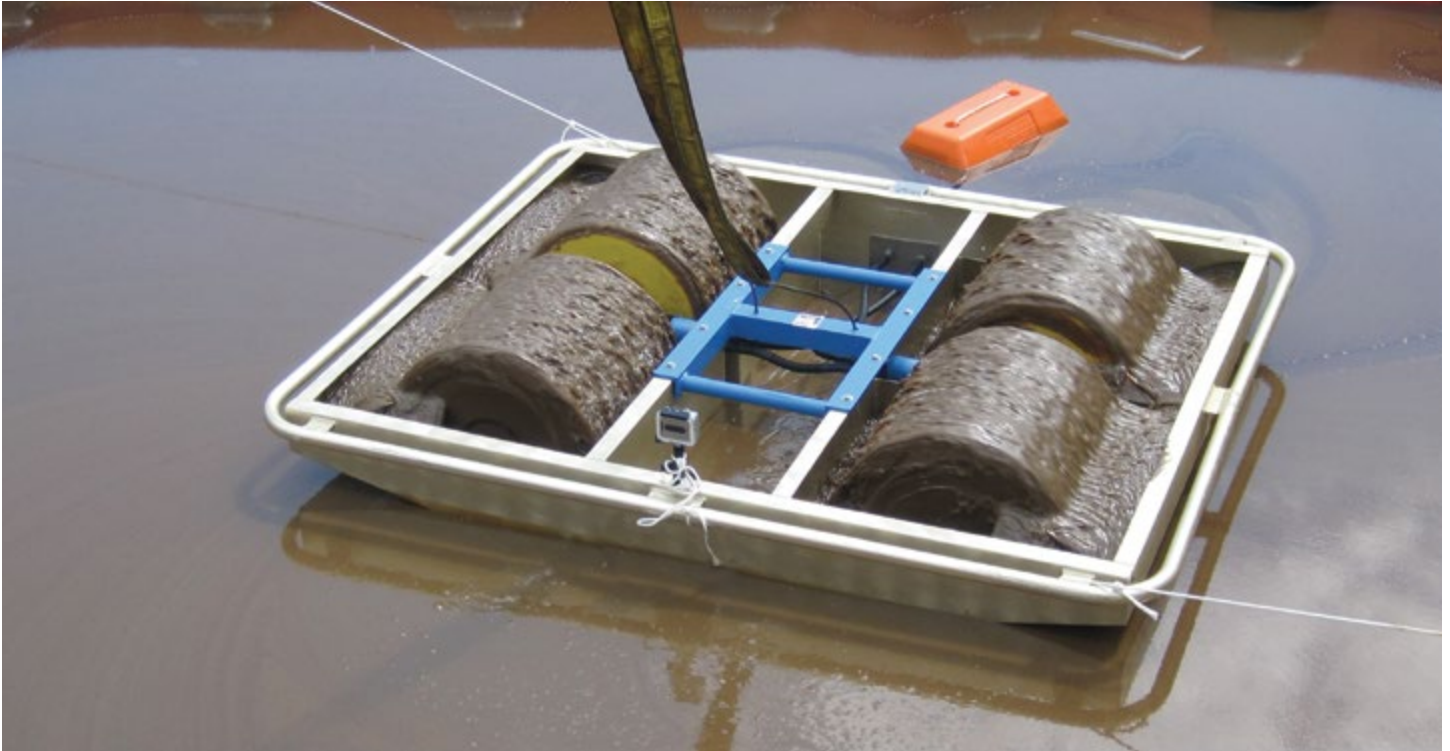
Industrial, Inland, Harbor, Coastal

Smooth or Grooved Drums

The **ELASTEC TDS136 Drum Skimmer** is widely used in continuous duty industrial applications, as well as near shore response. This lightweight skimmer mixes high recovery rates with portability as it can be easily handled by two people.



Magnum 100



251 gpm / 56 m³h*

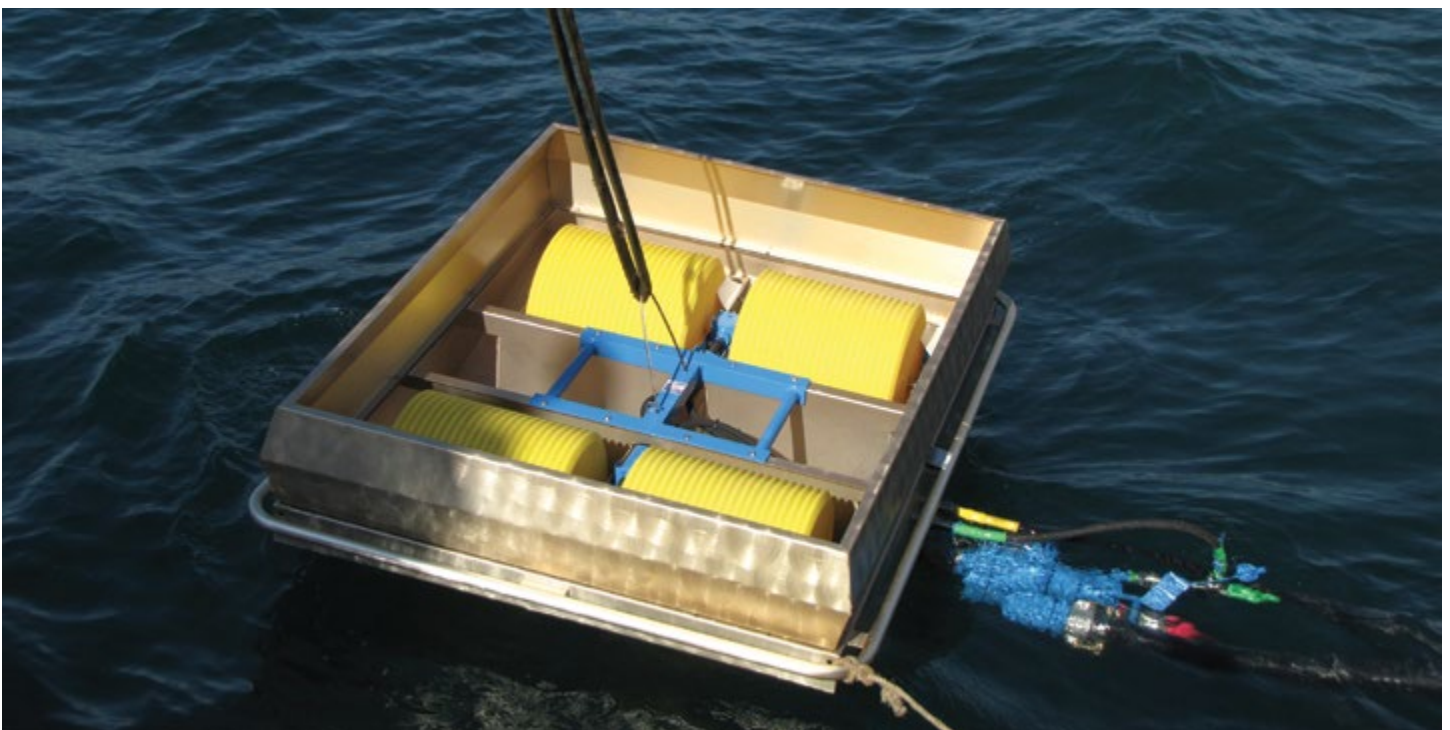
202 lb / 92 kg

71 x 57 x 26 inch / 1.80 x 1.77 x 0.66 m

Industrial, Harbor, Coastal

Smooth or Grooved Drums

The **ELASTEC Magnum 100 Drum Skimmer** is suited for larger spills in inland and coastal waters. The four drums provide more stability in open water, while an optional Wave Breaker increases the freeboard. Steam coils can be fitted for cold environments.



Magnum 200



356 gpm / 81 m³h*

300 lb / 136 kg

71 x 97 x 26 inch / 1.80 x 2.50 x 0.70 m

Industrial, Coastal, Open Water

Smooth or Grooved Drums

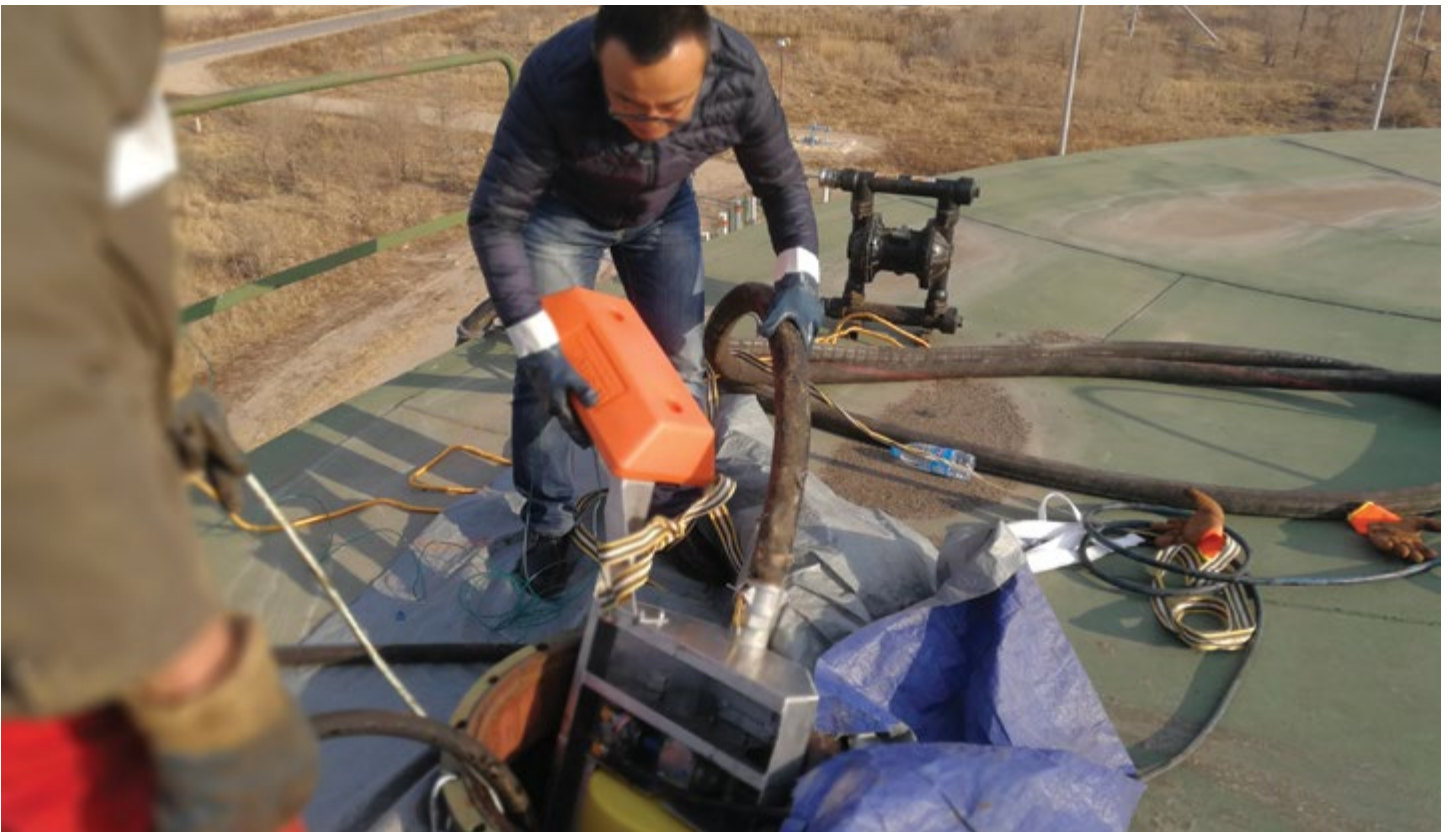
The **ELASTEC Magnum 200 Drum Skimmer** can be deployed from boats for open water response. In the photo, a Wave Breaker is attached, which increases the freeboard of the skimmer.



Hermit



The **ELASTEC Hermit Skimmer** is designed to fit inside tanks with small openings. This lightweight skimmer is capable of fitting through a 20 inch / 50 cm hatch in waste oil tanks, sumps or manholes. The pneumatic motor can be operated with a small compressor or plant air. Supplied with an optional air operated diaphragm pump, it can recover a wide range of oils. *Note: Not for hazardous locations.*



Steam Heat Systems



Our Drum Skimmers are available with a **Steam Heating System** for cold environments. Steam coils can be installed in the collection troughs on new or existing skimmers. The heat transferred by the steam helps the skimmer to function by melting the snow and ice surrounding the skimmer, allowing the oil to flow onto the collection drums. It also warms the oil that is being picked up, aiding the flow to the transfer pump and preventing the hoses from freezing.

Brush & Disc (Drum) Skimmers

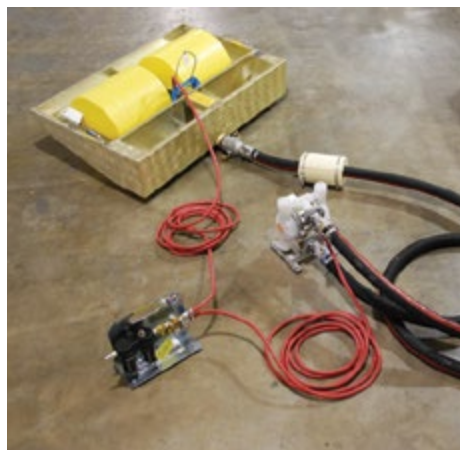


Elastec offers a lineup of Disc and Brush inserts for our well-proven range of drum skimmers. These inserts represent patented technology that not only enhance recovery rates, but also expand the viscosity range that can be collected. All inserts retain the lightweight and shallow draft features of the skimmer head that is so popular with responders. Drum inserts are interchangeable in the field with minimal tools and effort.

System Configurations



Diesel Hydraulic



Pneumatic



Electric Hydraulic



1309 West Main St.
Carmi, Illinois 62821, USA
+1 (618) 382-2525
www.elastec.com elastec@elastec.com

000-MKT-SL-301
REV#1