

ELASTEC
E28 Work Boat
28ft Landing Craft



Oil Spill Equipment | Floating Barriers | Incinerators



Elastec manufactures special-purpose landing craft boats for a variety of emergency response and marine support operations such as oil spill recovery, rescue, research and maintenance. Our sturdy, marine-grade welded aluminum work boats are uniquely designed to withstand frequent use in demanding conditions. From inland waterways to nearshore and open waters, Elastec landing craft utility boats have a reputation for safety and reliability. Purpose-built features, such as the open bow and ramp, facilitate the transfer of equipment and utility vehicles from land to water. The structural strength of the hull can accommodate up to 5,500 lb / 2,495 kg and offers a large work platform.

Standard Construction Specification	
Length:	28 feet 1 inch / 8.56 m (plus Push Knees or Outboard Guard)
Beam:	8 feet 1 inch / 2.46 m (may vary with D Fendering)
Cargo Door:	64 inch / 1.62 m
Max Cargo:	5,500 lb / 2,495 kg
Aluminum Construction:	5086 alloy .25 inch / 6.25 mm bottom
	5052 alloy .190 inch / 4.83 mm sides
Wide Welded Gunwales	
Dual Bow Eye and Transom Tie Downs	
Self Bailing Deck	
100 US Gallon / 378 liter Capacity Below Deck, Built-In Aluminum Fuel Tank	
Welded Deck Cleats	
Locker Stowage	
Ritchie Navigation Compass	
Master Battery Switch	
Zinc Anode Protection Throughout	
1,500 GPH Automatic Bilge Pump	
Water Resistant Circuit Breaker Panels	
12 volt DC Electrical Dual Battery System (batteries not included)	
Navigation Lights (USCG)	



Optional Extras (shown)

Hull:

Suzuki 140 HP Twin Outboards with SS Prop, Digital Gauges, and Hydraulic Steering

Canopy Top with Observation Perch

Console with Tempered Windshield and Winshield Wiper

Tow Bollard

Davit 800 lb with Manual Winch

Outboard Motor / Stern Guard with Step Platform

Push Knees with Boom Poles

"D" Bumper Rub Rails

Gunwale Railing

Deck Lashing Railing (cargo tie downs)

Painted Non-Skid Deck

Pilot Bolster Seat

Cushions Storage Seat (3)

Gunnel Side Seats (2)

Electronics and Lighting:

Lowrance VHF Radio and Hailer

Lowrance Chart Plotter with Sonar

Forward Docking Lights

Remote Spotlight

Forward and Aft Deck Floodlights (4)

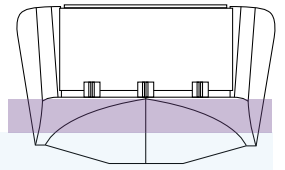
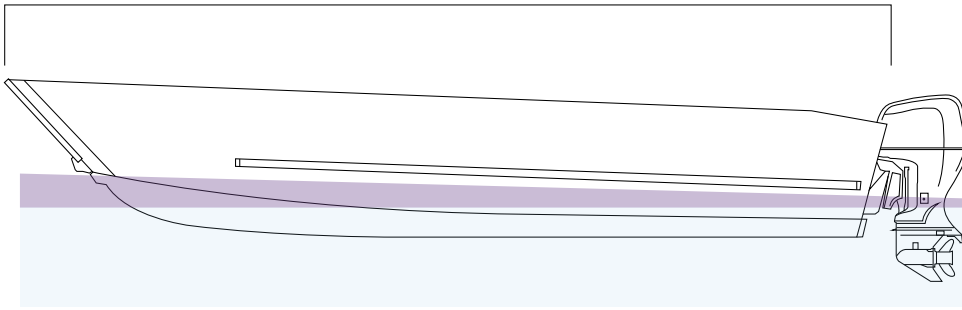
Deck Courtesy Lighting

Electric Trim Tabs

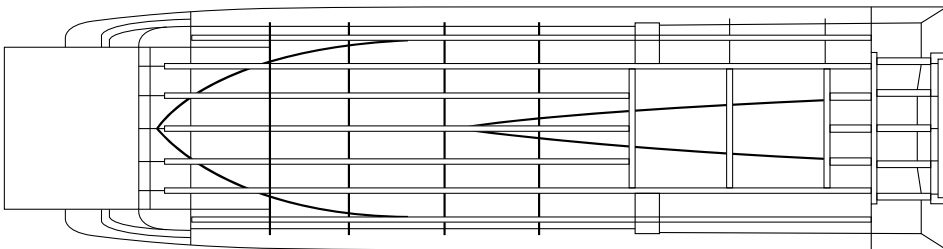
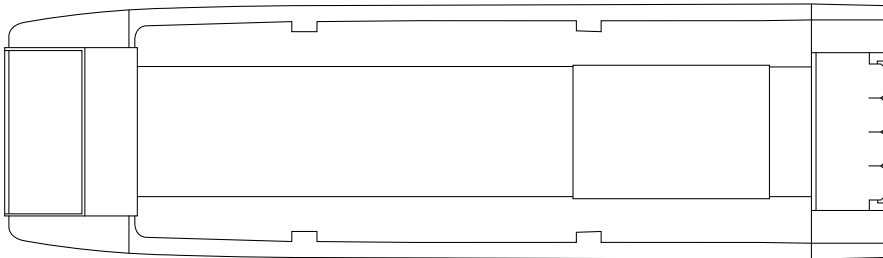
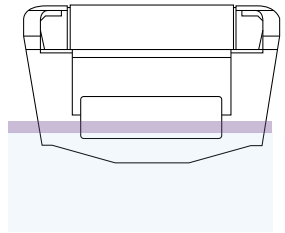
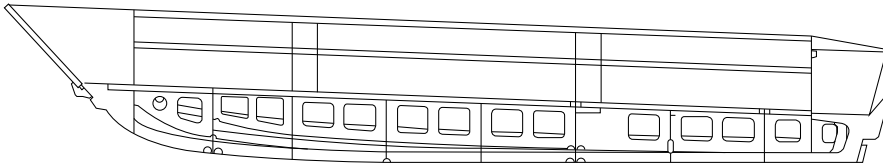
Trailer:

Galvanized Trailer - Triple Axle with Side Bunks

28 ft 7 ³/₁₆ inch



- Waterline at 5,152 lb (no cargo)
- Waterline at 10,152 lb



1309 W. Main St.
Carmi, Illinois 62821, USA
+1 (618) 382-2525
www.elastec.com elastec@elastec.com