

ELASTEC
Omni Cat™
Multi-Purpose Workboat



Oil Spill Equipment | Floating Barriers | Incinerators



The ELASTEC Omni Cat is manufactured at Elastec's Carmi, Illinois USA facility. Its unique design allows for a variety of pod systems to be positioned between the hulls of this versatile catamaran to perform a variety of waterway maintenance and marina tasks. The different pods allow for floating trash collection, quay wall and river walk wash down, sanitation pump out system, cargo hauling and A-frame winching capabilities of 1500 lb. When the deck plates are in place, the Omni Cat™ becomes a useful platform for conducting maintenance tasks. This vessel requires minimal upkeep as it has few moving parts and its propulsion is provided by a single outboard.

Vessel Specification

Overall Hull Length	23 ft / 7.0 m
Beam	8 ft 3 in / 2.5 m
Hull Depth	2 ft / 0.6 m
Operating Draft MS Hull (Lightship)	6 in / 15 cm
Max. Draft (Full Load)	10 in / 25 cm
Displacement (Lightship)	2,800 lb / 1,270 kg
Max. Cargo/Payload Capacity*	2,204 lb / 1,000 kg
Debris Storage Capacity	99 ft ³ / 2.80 m ³
Speed Collecting Solids/Hydrocarbons	1-2 knots (2-3 mph)
Max Speed (lightship)	8 knots

*Combination of persons or cargo on-board



Vessel Characteristics

Designed for sheltered waters, the multi-function, highly maneuverable ELASTEC Omni Cat™ is manufactured from high quality marine grade aluminum. The unique drop-in pod system allows for a range of duties to be undertaken efficiently while offering a large flat working area and excellent stability.

Features and Benefits

- Shallow draft, excellent maneuverability for operating in confined spaces
- Easily loaded and transported by road with optional trailer
- Marine grade aluminum construction
- Stable working platform with variety of deck configurations

Loading and unloading of cargo is easy using the unique lift-in pod arrangement. The handrails are removable to allow easy deck access. A range of loading ramps and ladder designs are available.

Special Features

- Unique interchangeable pod system allows the vessel to perform many functions.
- Efficient system for collecting floating trash and debris eliminates complex hydraulics or moving parts.
- Wheeled fenders allow the craft to be driven along quay walls where trash is most likely to collect.
- Cutaway transoms allow the boat to pull away from quay walls with ease.
- Pod system allows items to be loaded directly on the quayside and lifted onto the boat.

Stability/Operational Range

- The vessel is designed for operation in sheltered waters. The operating envelope is for a recommended maximum significant wave height of 1 ft / 0.30 meters and occasional 1.6 ft / 0.50 m waves.
- The design is suitable for super-tropical conditions without any restriction in performance. The hull can be protected with a suitable anti-fouling paint (optional).

Hull

- Two pressure tested hulls constructed from 3/16 in / 4.7 mm marine-grade aluminum linked by traverse beams
- Separate water-tight compartments
- 1/4 in tread plate decks
- Four built-in lifting points
- Four heavy duty aluminum deck welded mooring cleats
- Inspection points to all water-tight compartments

Fendering

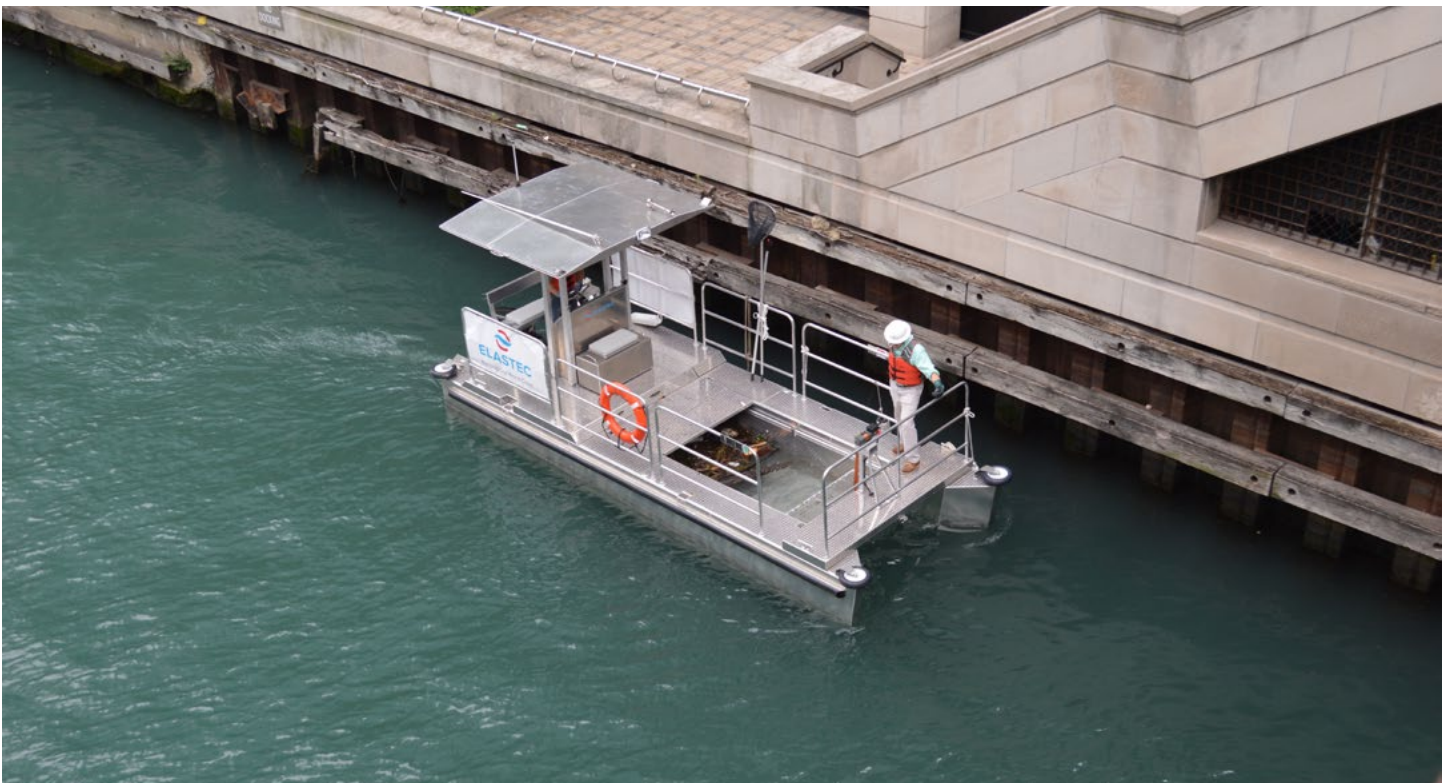
- Heavy-duty D section marine rubber protective fender
- Wheeled fenders on all sides for running along quay walls

Storage Box

- Aluminum deck storage box mounted forward of the wheelhouse with cushioned hinged lid serves as crew seat.

Deck

- Deck plates (work platform configuration), constructed from aluminum tread plate (non-slip) on supporting box section. Can be positioned in a variety of combinations for versatility and even when in trash collection mode, providing a useful working space.
- Handrails - Removable (lift off) aluminum safety handrails, recess-mounted to the hull for easy loading of wheel-on equipment/storage containers.



Optional Pods

Litter Basket

The 99 cf / 2.8 m capacity basket collects floating trash and debris and features aluminum locking locating bolts for secure positioning between hulls. The basket has fine perforated aluminum side panels, plated base with drain holes, forward hinged mesh gate and aft section non-return gate (2 inch diameter) for reverse thrust. Strengthened corner points on litter basket allow for secure crane hoisting.

A-Frame Lifting System

The A-frame lifting system with a 1500 lb. mid-ship pull for added stability is ideal for hoisting and inspecting navigational buoy moorings and a multitude of applications that cannot be accomplished with standard craft.

Pump Out Pod

The Pump Out Pod is designed for servicing sewage holding tanks on boats. The pod's holding tank is located below deck adding to the stability of the Omni Cat™. The gasoline engine powered diaphragm pump delivers 40 gpm at 12 ft dry suction head and 15 ft discharge. This pump system may also be used in emergency situations where pumping of a bilge or other location is needed. *Pump out grants may be available for vessels equipped with these systems.*

Wash-down Pod

Gasoline power washer used to wash down river walks and docks.

Weed Cutter

Designed to cut invasive aquatic plants, the 4 ft wide cycle cutter is used in conjunction with the collection basket to trim and collect vegetation.

Cargo Pod

The Cargo Pod, with strengthened corner lifting points for crane usage, has a maximum load capacity of 2,204 lb / 1,000 kg. Tread plate floor and sides.

Custom designs specific to your operations are available.

Standard Equipment

Deck Light
Flotation Ring
Center Console with Pivoting Metal Canopy
Hydraulic Steering
Removable Handrails
Tread Plate Decking
Removable Deck Plates
USCG LED Navigation Lighting
Zinc Anode Protection
Horn
Push Pole (Boat Hook)
Built in Fuel Tank
Marine Radio
Depth Sounder

Optional Equipment

Fire Extinguisher
Personal Flotation Devices
Bow Ramp
Wheel House
Included:
Sliding Doors
Tempered Glass
Windshield Wiper
Trailer
Included:
Spare Tire

Motor Options

Suzuki 25 hp
Suzuki 40 hp (recommended)
Suzuki 50 hp



926 County Road 1350 N
Carmi, Illinois 62821, USA
+1 (618) 382-2525

www.elastec.com elastec@elastec.com

BPP-022.1
1/14/16