

ELASTEC
PACS 2000

Municipal Vacuum System



Oil Spill Equipment | Floating Barriers | Incinerators



Dimensions

Vacuum Tank Capacity	1,000 gallons / 3,785 litres
Fresh Water Tanks	Two 100 gal / 378 litres
Length	21 ft 11 inch / 6.7 m
Width	7 ft 6.5 inch / 2.28 m
Height (with boom)	9 ft 10.5 inch / 3.0 m
Weight (empty)	10,180 lb / 4,617 kg
Tongue Weight (empty)	1,725 lb / 782 kg
GVWR	20,000 lb / 9,071 kg

Power

Engine	99 hp Tier 3 (Kubota) 118 hp Tier 4 (Yanmar)
Emissions Compliance	EPA Tier 3 / EU Stage IIIA EPA Tier 4 / EU Stage IIIB
Fuel	Diesel
Cooling Medium	Water
Aspiration	Turbocharged
Number of Cylinders	4
Fuel Tank Capacity	27 gal / 102 litres

The ELASTEC PACS 2000 is an extremely durable vacuum system designed for municipal use. The center mounted controls enable operation from both sides of the unit to keep workers away from traffic. The boom arm and water jetter allow for potholing and hydro-excavation jobs.

Standard Accessories

- Traffic Cone Holder
- Tool Box
- Auxiliary Hydraulic Circuit

Optional

- Vibrator
- Sewer Hose Reel with 250 ft of 3/8 inch hose
- Hydraulic Tongue Jack
- Hydraulic Stabilizer Jacks
- Valve Exerciser
- Boom Arm with Pendant
 - Pendant Operated
 - Remote Control (optional)
- ES400 Trash Pump
- Battery Tender



Vacuum System

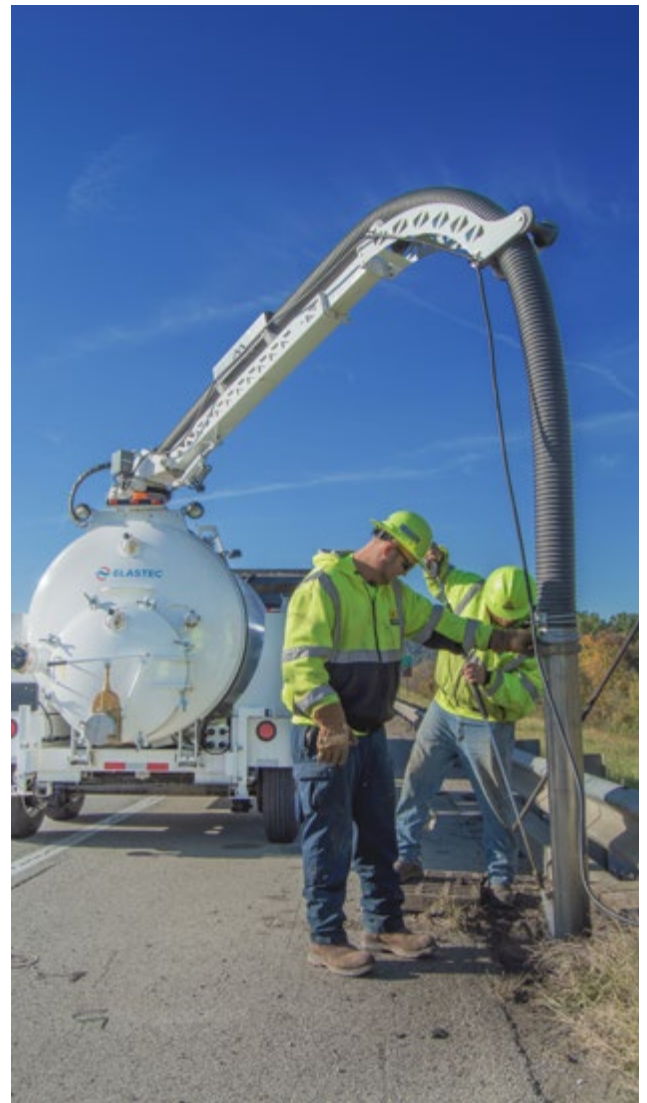
Air Flow	2,000 cfm
Vacuum, max	16 inch Hg
Tank Outlet Valve	6 inches
Filter Type	Washable polyester
Filter Area	130 square feet
Suction Hose	4 inch or 6 inch

Water System (optional)

Tank Capacity	200 gal / 757 litres
Pump Flow	5 gpm / 19 lpm
Pump Pressure	3,000 psi / 206.8 bar
Pressure Hose	50 ft / 15 m
Hydraulic System	Gear pumps

Battery

SAE Cold Crank Rating @ 0°F	950 amps
Electrical System	12V





1309 West Main St.
Carmi, Illinois 62821, USA
+1 (618) 382-2525
www.elastec.com elastec@elastec.com