

ELASTEC  
**PACS 920**

Municipal Vacuum System



Oil Spill Equipment | Floating Barriers | Incinerators



**Dimensions**

|                       |                              |
|-----------------------|------------------------------|
| Vacuum Tank Capacity  | 1,000 gallons / 3,785 litres |
| Fresh Water Tanks     | Two 100 gal / 378 litres     |
| Length                | 21 ft 11 inch / 6.7 m        |
| Width                 | 7 ft 6.5 inch / 2.28 m       |
| Height (with boom)    | 9 ft 10.5 inch / 3.0 m       |
| Weight (empty)        | 9,400 lb / 4,264 kg          |
| Tongue Weight (empty) | 1,480 lb / 671 kg            |
| GVWR                  | 20,000 lb / 9,071 kg         |

**Power**

|                      |   |
|----------------------|---|
| Engine               | 74 hp Tier 4 (Hatz)                                     |
| Emissions Compliance | EPA Tier 4 Final<br>EU Stage V with silent pack enclose |
| Fuel                 | Diesel  |
| Cooling Medium       | Water   |
| Aspiration           | Turbocharged  |
| Number of Cylinders  | 4   |
| Fuel Tank Capacity   | 27 gal / 102 litres                                     |

The ELASTEC PACS 920 is an extremely durable vacuum system designed for municipal use. The center mounted controls enable operation from both sides of the unit to keep workers away from traffic. The boom arm and water jetter allow for potholing and hydro-excavation jobs.

**Standard Accessories**

- Traffic Cone Holder
- Tool Box
- Auxiliary Hydraulic Circuit

**Optional**

- Vibrator
- Sewer Hose Reel with 250 ft of 3/8 inch hose
- Hydraulic Tongue Jack
- Hydraulic Stabilizer Jacks
- Valve Exerciser
- Boom Arm with Pendant
  - Pendant Operated
  - Remote Control (optional)
- Offloading Pump
- Battery Tender





### Vacuum System

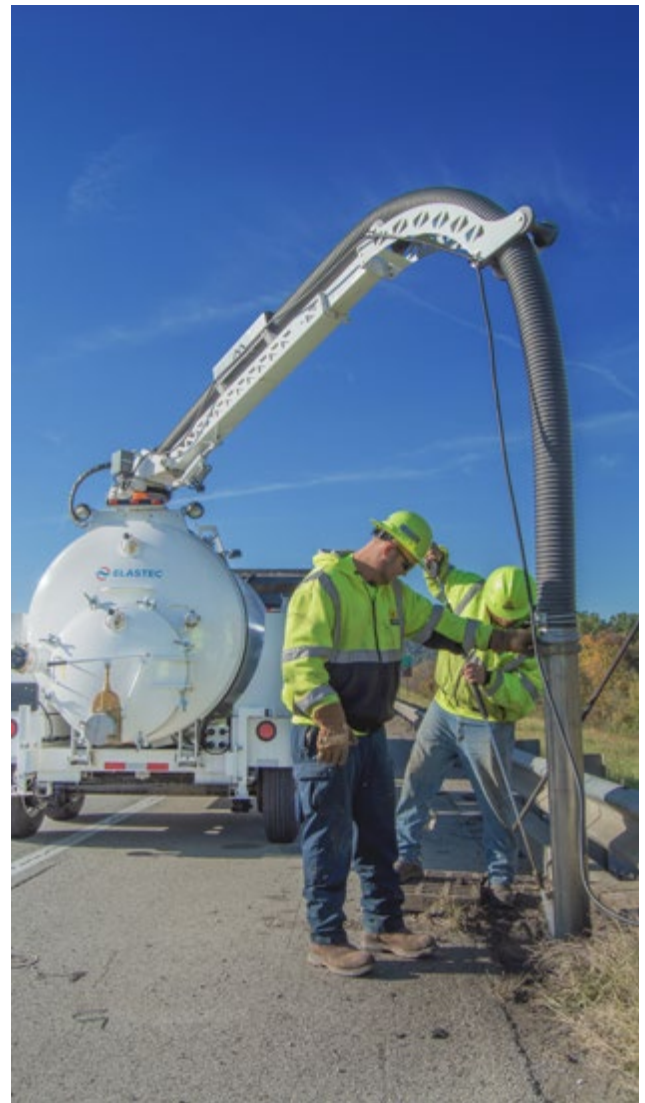
|                   |                    |
|-------------------|--------------------|
| Air Flow          | 920 cfm            |
| Vacuum, max       | 15 inch Hg         |
| Tank Outlet Valve | 6 inches           |
| Filter Type       | Washable polyester |
| Filter Area       | 130 square feet    |
| Suction Hose      | 4 inch             |

### Water System (optional)

|                  |                       |
|------------------|-----------------------|
| Tank Capacity    | 200 gal / 757 litres  |
| Pump Flow        | 5 gpm / 19 lpm        |
| Pump Pressure    | 3,000 psi / 206.8 bar |
| Pressure Hose    | 50 ft / 15 m          |
| Hydraulic System | Gear pumps            |

### Battery

|                             |          |
|-----------------------------|----------|
| SAE Cold Crank Rating @ 0°F | 950 amps |
| Electrical System           | 12V      |





1309 West Main St.  
Carmi, Illinois 62821, USA  
+1 (618) 382-2525  
[www.elastec.com](http://www.elastec.com) [elastec@elastec.com](mailto:elastec@elastec.com)